

CHANGE IN PLANE DETAIL

Wall Guardian FW-100A System, Not to Scale

Detail is intended to be a guide for air barrier installation only. As a manufacturer of construction materials, STS Coatings does not assume responsibility for errors in design or engineering. Architect or owners representative must verify suitability of details.

Rev: 052016

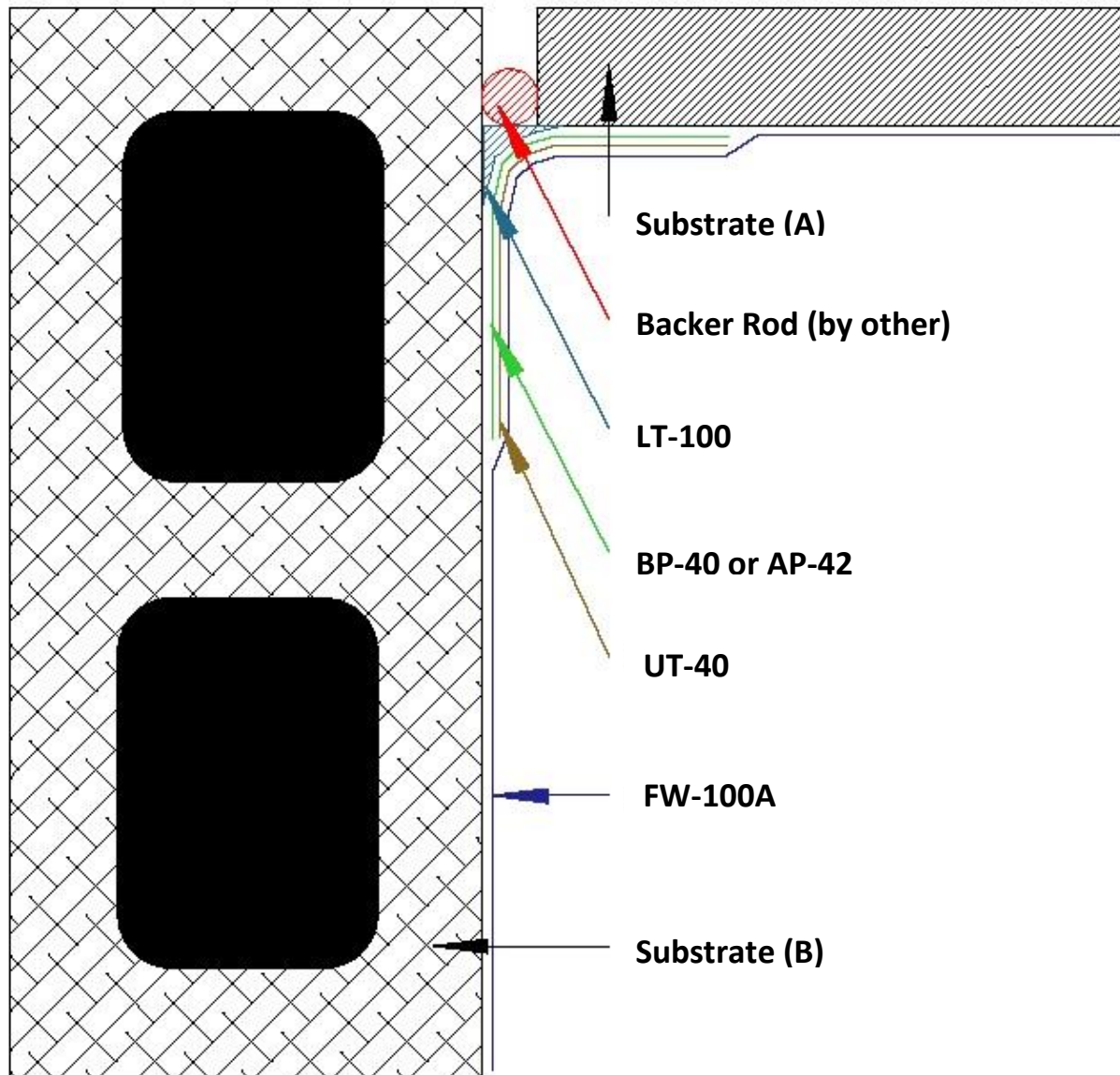


830-995-5177

info@stscoatings.com

Manufactured by





CHANGE IN SUBSTRATE DETAIL

Wall Guardian FW-100A System, Not to Scale



830-995-5177

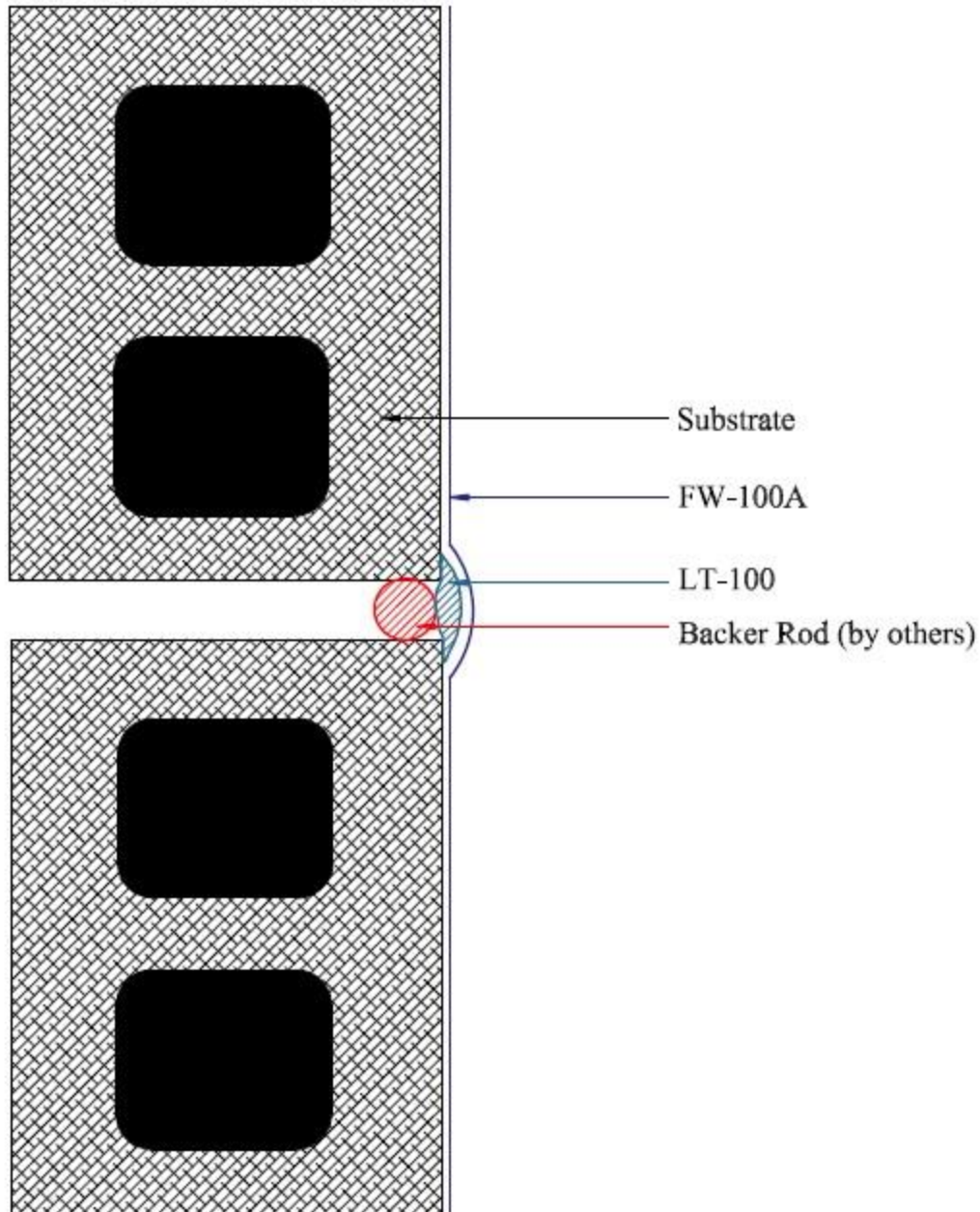
info@stskoatings.com

Manufactured by

Detail is intended to be a guide for air barrier installation only. As a manufacturer of construction materials, STS Coatings does not assume responsibility for errors in design or engineering. Architect or owners representative must verify suitability of details.

Rev: 052016





CONTROL JOINT DETAIL

Wall Guardian FW-100A System, Not to Scale

Detail is intended to be a guide for air barrier installation only. As a manufacturer of construction materials, STS Coatings does not assume responsibility for errors in design or engineering. Architect or owners representative must verify suitability of details.

Rev: 052016

 **WALL GUARDIAN** 

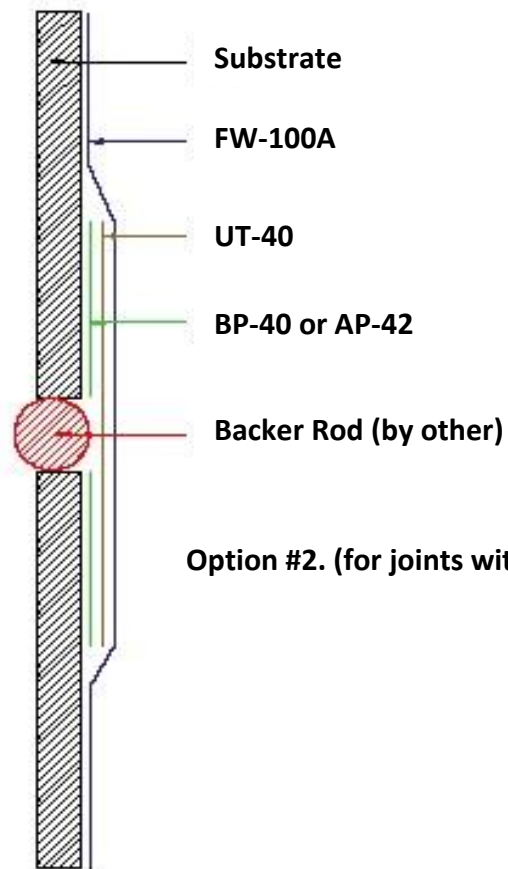
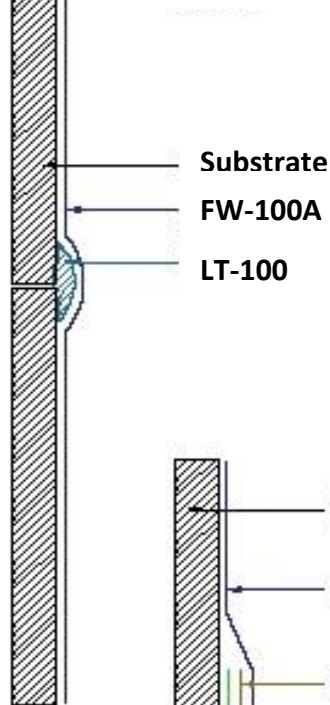
830-995-5177

info@stscoatings.com

Manufactured by

**STS Coatings**

Option #1. (for joints less than ¼" gap)



Option #2. (for joints with ¼" gap or greater)

DEFLECTION (board to board) JOINT DETAIL

Wall Guardian FW-100A System, Not to Scale



830-995-5177

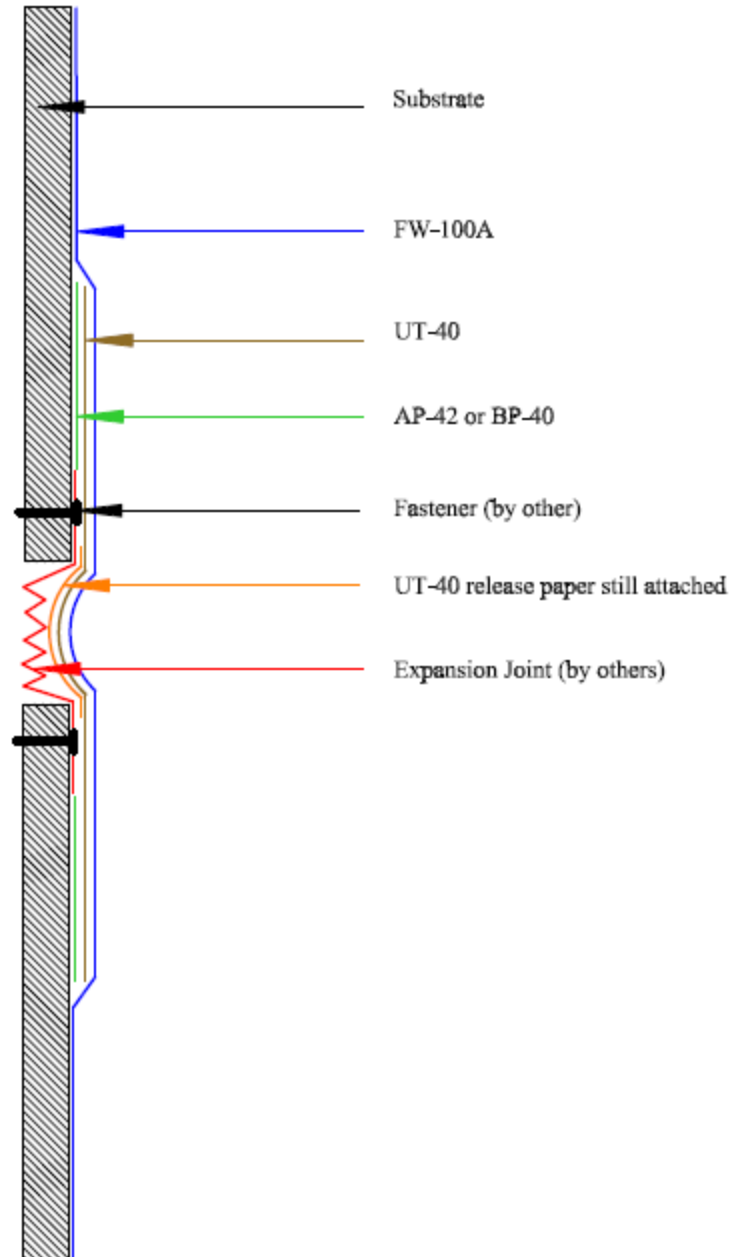
info@stscoatings.com

Manufactured by

Detail is intended to be a guide for air barrier installation only. As a manufacturer of construction materials, STS Coatings does not assume responsibility for errors in design or engineering. Architect or owners representative must verify suitability of details.

Rev: 052016





EXPANSION JOINT DETAIL

Wall Guardian FW-100A System, Not to Scale

Create bellow in membrane by looping UT-40 into gap. Leave the release paper attached to the UT-40 material inside the bellow to ensure there is no adhesion to E.J. or surfaces within the gap.

Detail is intended to be a guide for air barrier installation only. As a manufacturer of construction materials, STS Coatings does not assume responsibility for errors in design or engineering. Architect or owners representative must verify suitability of details.

Rev: 052016

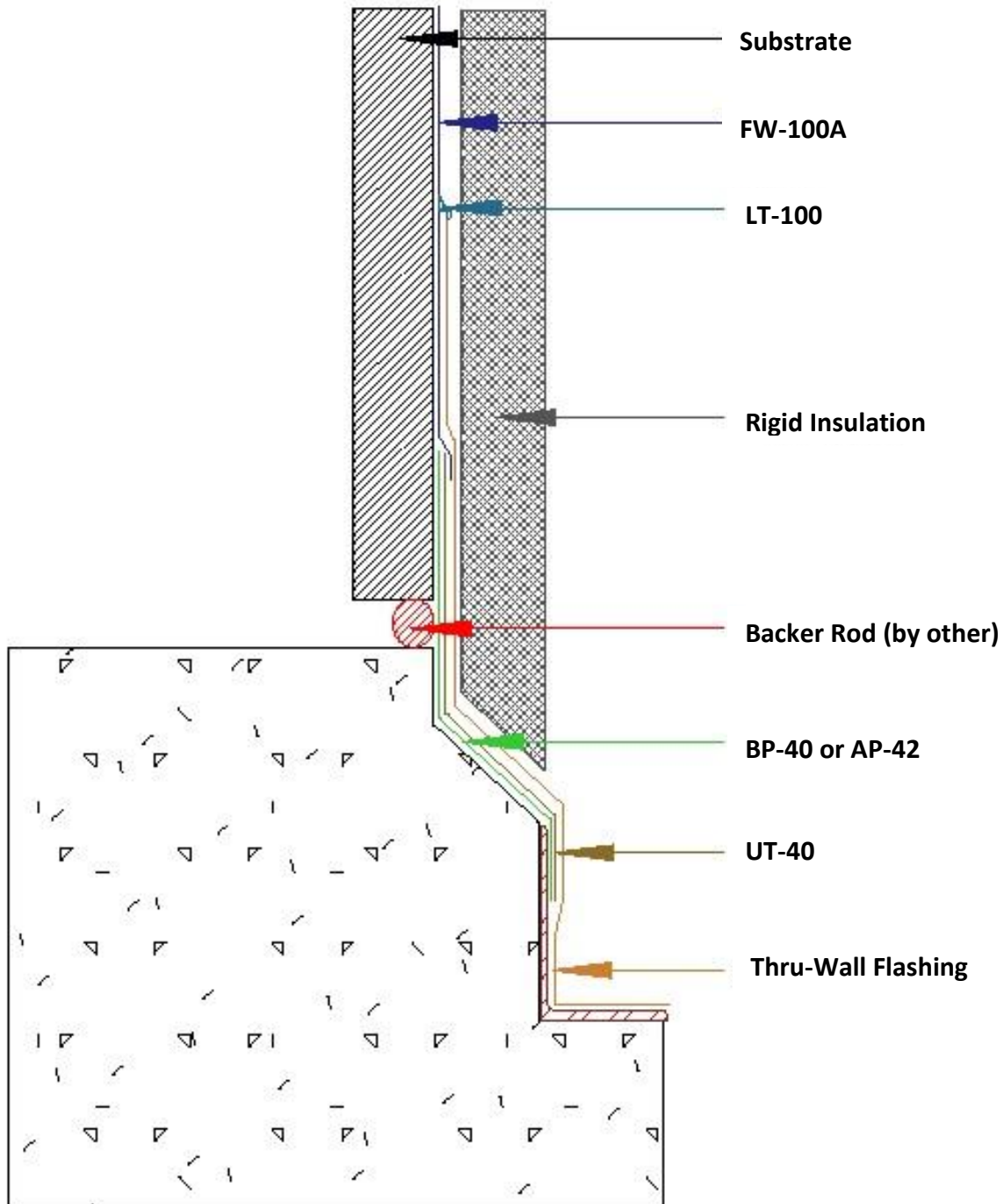


830-995-5177

info@stscoatings.com

Manufactured by





FOUNDATION DETAIL

Wall Guardian FW-100A System, Not to Scale



830-995-5177

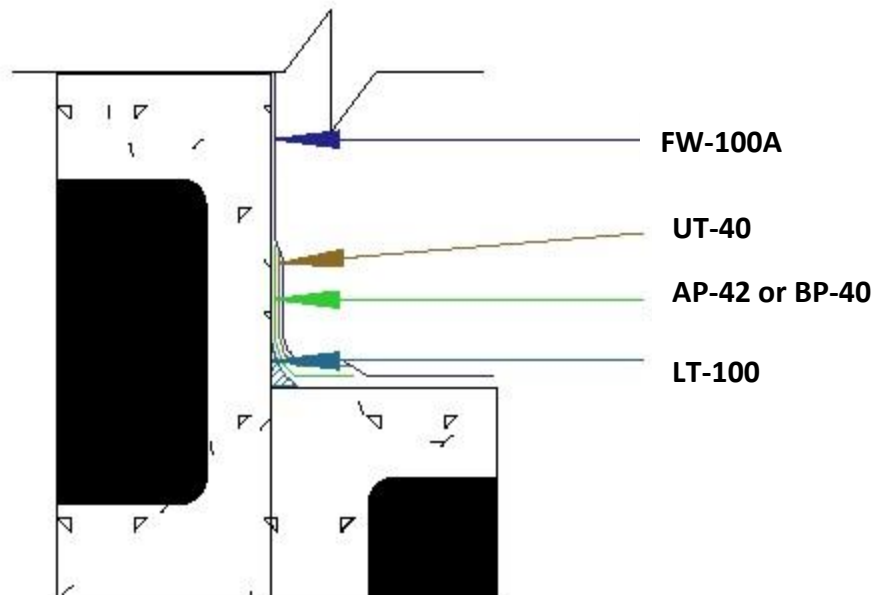
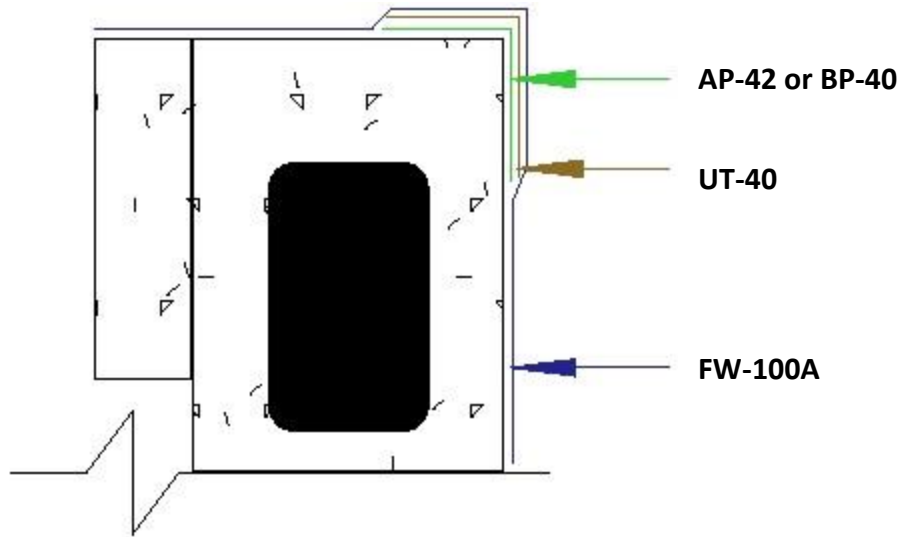
info@stscoatings.com

Manufactured by

Detail is intended to be a guide for air barrier installation only. As a manufacturer of construction materials, STS Coatings does not assume responsibility for errors in design or engineering. Architect or owners representative must verify suitability of details.

Rev: 052016





Notes: The AP-42/BP-40 and UT-40 may be replaced with an additional application of FW-100A, applied at 40 wet mils extended 3" past the corner on each side. This should total the coverage rate of FW-100A to a wet film thickness of 80 wet mils. All applications must be applied such that a void and pinhole free surface is achieved.

INSIDE AND OUTSIDE CORNERS CMU DETAIL

Wall Guardian FW-100A System, Not to Scale



830-995-5177

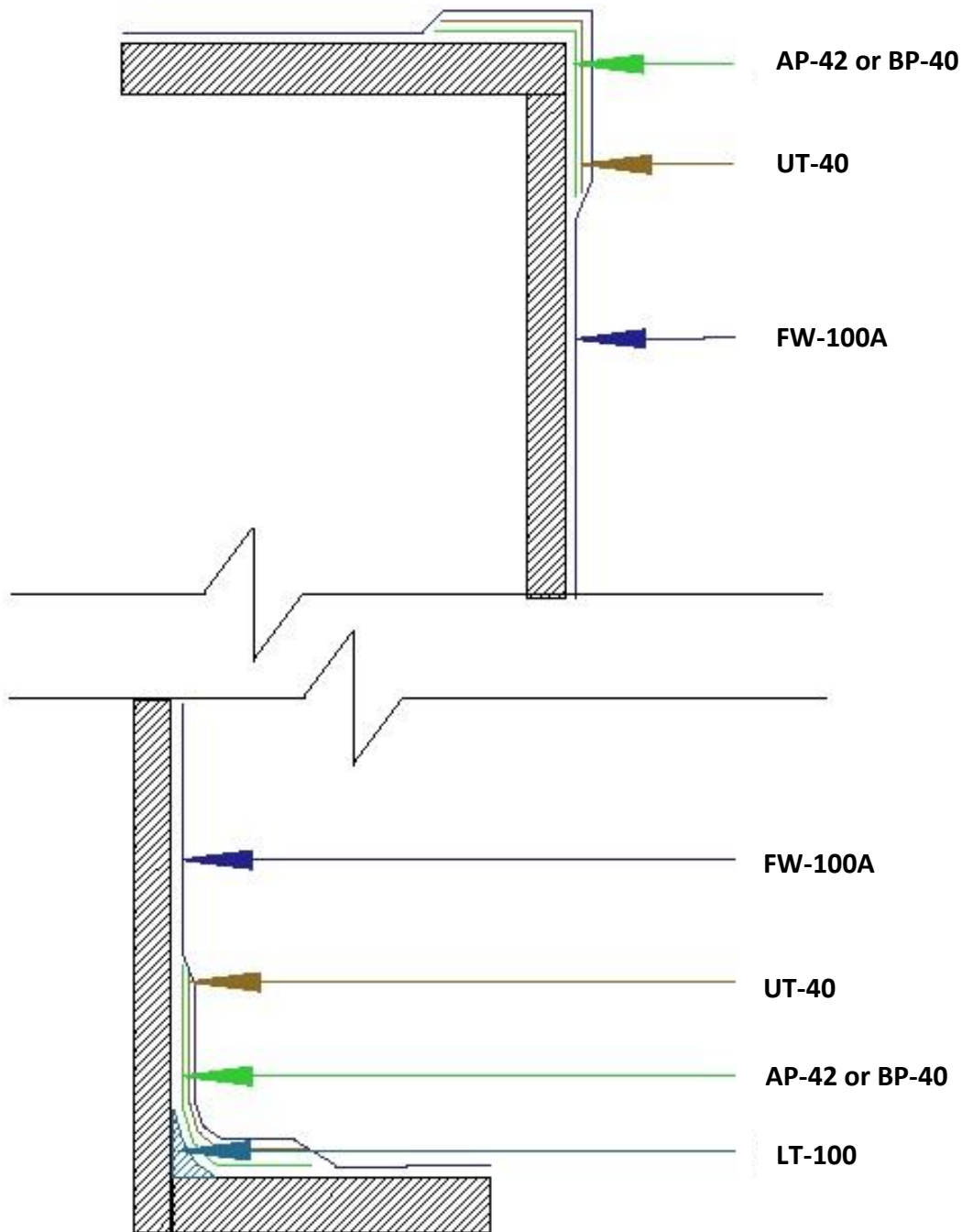
info@stscoatings.com

Manufactured by

Detail is intended to be a guide for air barrier installation only. As a manufacturer of construction materials, STS Coatings does not assume responsibility for errors in design or engineering. Architect or owners representative must verify suitability of details.

Rev: 052016





INSIDE AND OUTSIDE CORNERS SHEATHING DETAIL

Wall Guardian FW-100A System, Not to Scale



830-995-5177

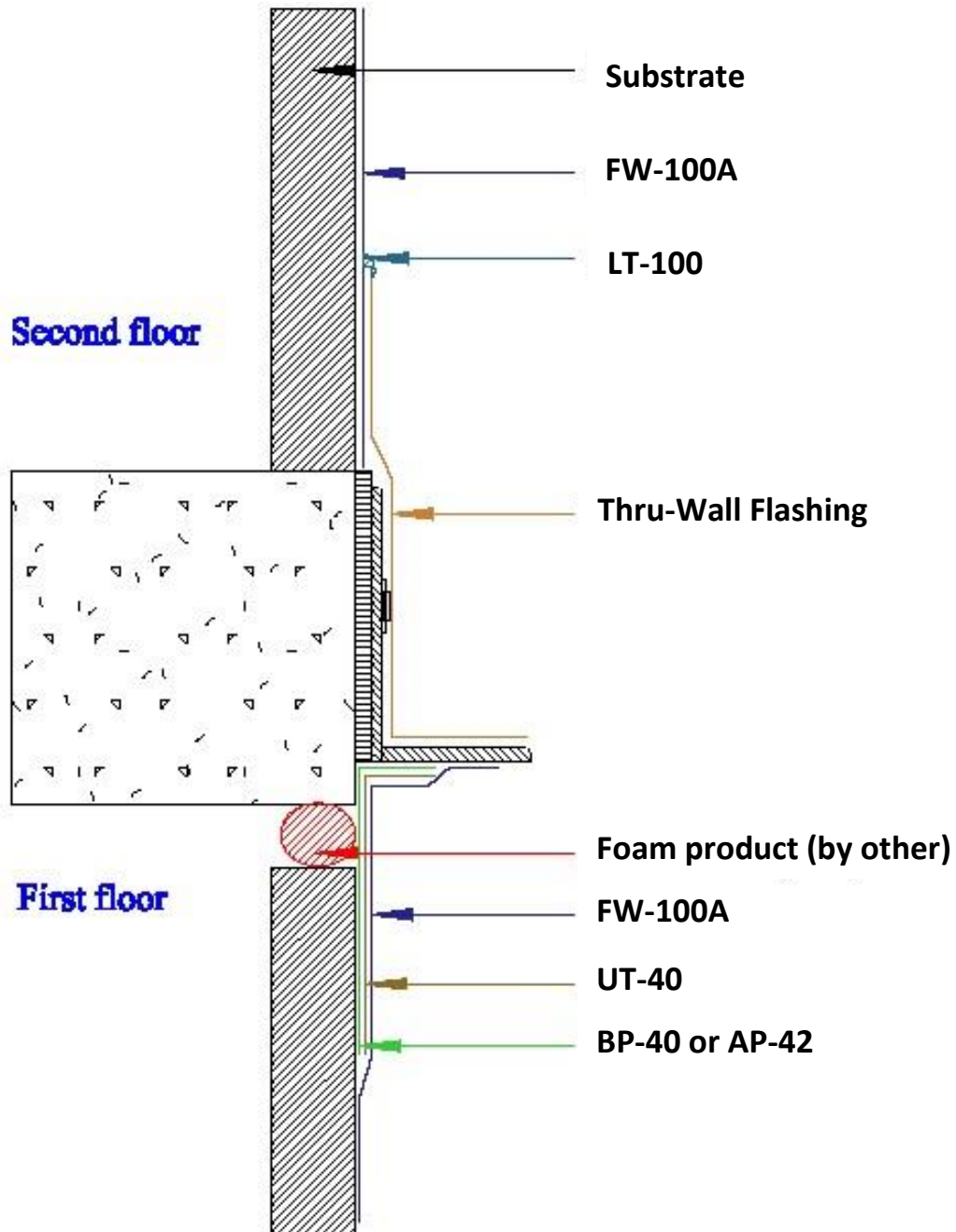
info@stscoatings.com

Manufactured by

Detail is intended to be a guide for air barrier installation only. As a manufacturer of construction materials, STS Coatings does not assume responsibility for errors in design or engineering. Architect or owners representative must verify suitability of details.

Rev: 052016





INTERSTORY TRANSITION DETAIL

Wall Guardian FW-100A System, Not to Scale



830-995-5177

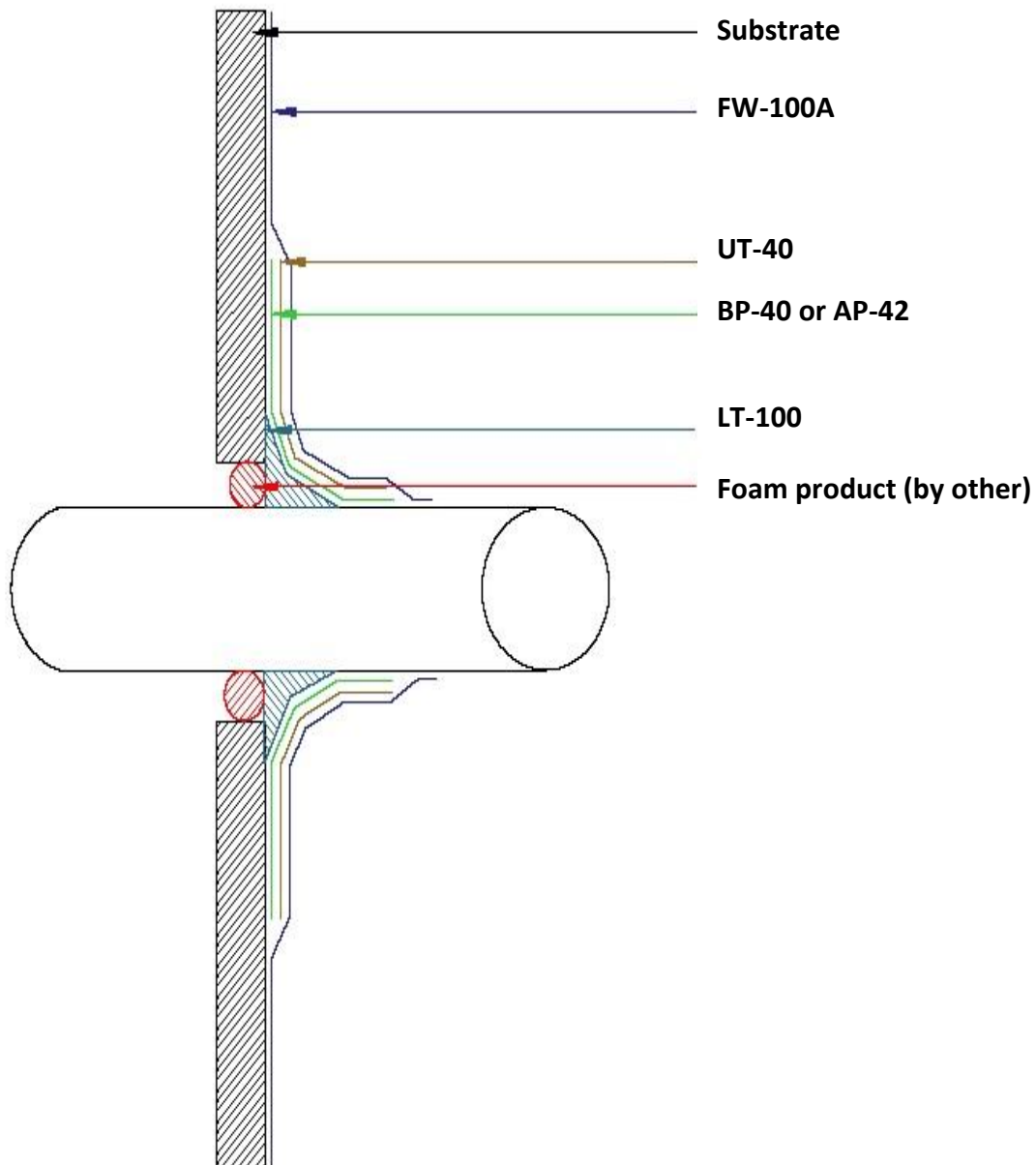
info@stscoatings.com

Manufactured by

Detail is intended to be a guide for air barrier installation only. As a manufacturer of construction materials, STS Coatings does not assume responsibility for errors in design or engineering. Architect or owners representative must verify suitability of details.

Rev: 052016





LOOSE FITTING PENETRATION DETAIL

Wall Guardian FW-100A System, Not to Scale



830-995-5177

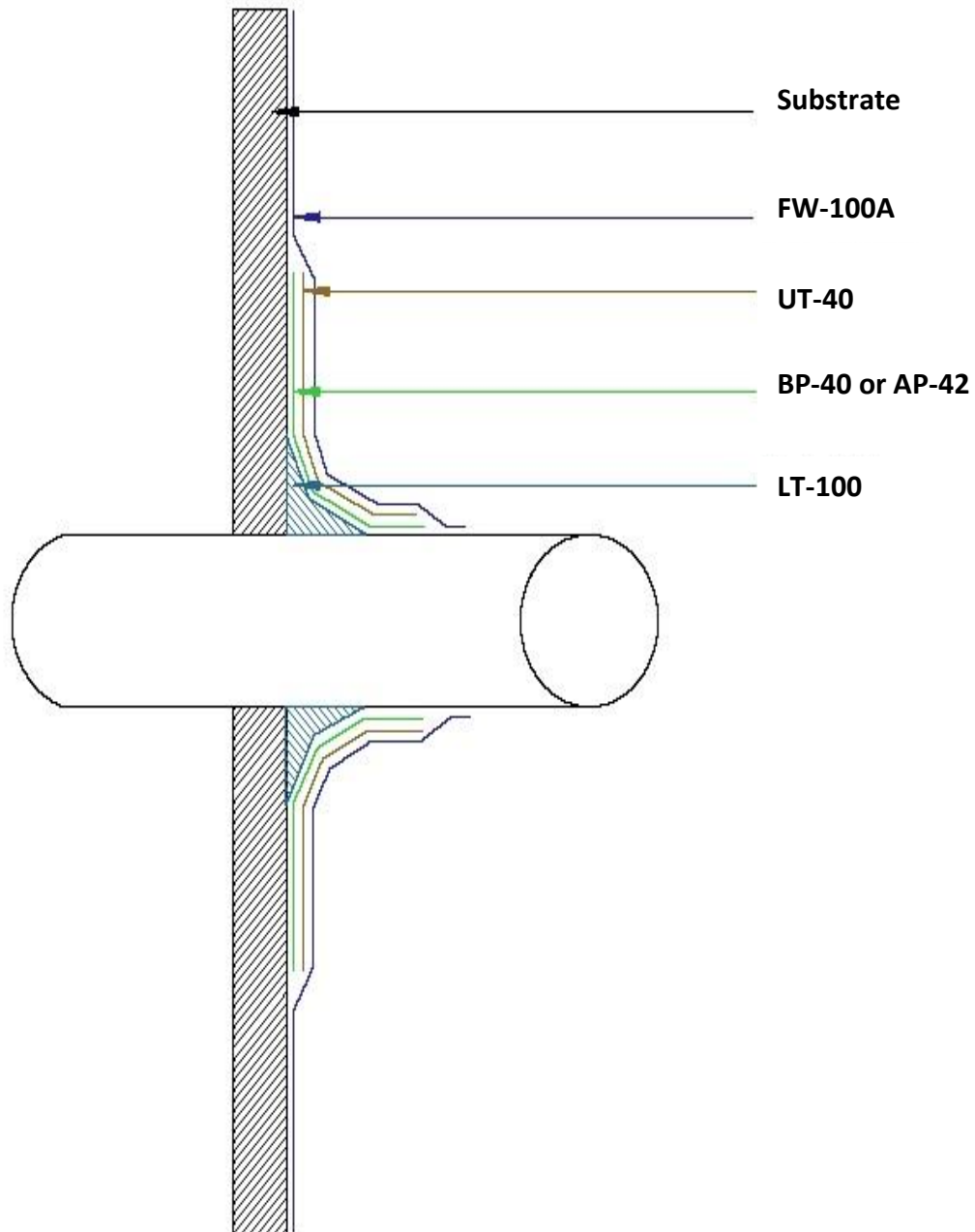
info@stscoatings.com

Manufactured by

Detail is intended to be a guide for air barrier installation only. As a manufacturer of construction materials, STS Coatings does not assume responsibility for errors in design or engineering. Architect or owners representative must verify suitability of details.

Rev: 052016





TIGHT FITTING PENETRATION DETAIL

Wall Guardian FW-100A System, Not to Scale

Detail is intended to be a guide for air barrier installation only. As a manufacturer of construction materials, STS Coatings does not assume responsibility for errors in design or engineering. Architect or owners representative must verify suitability of details.

Rev: 052016

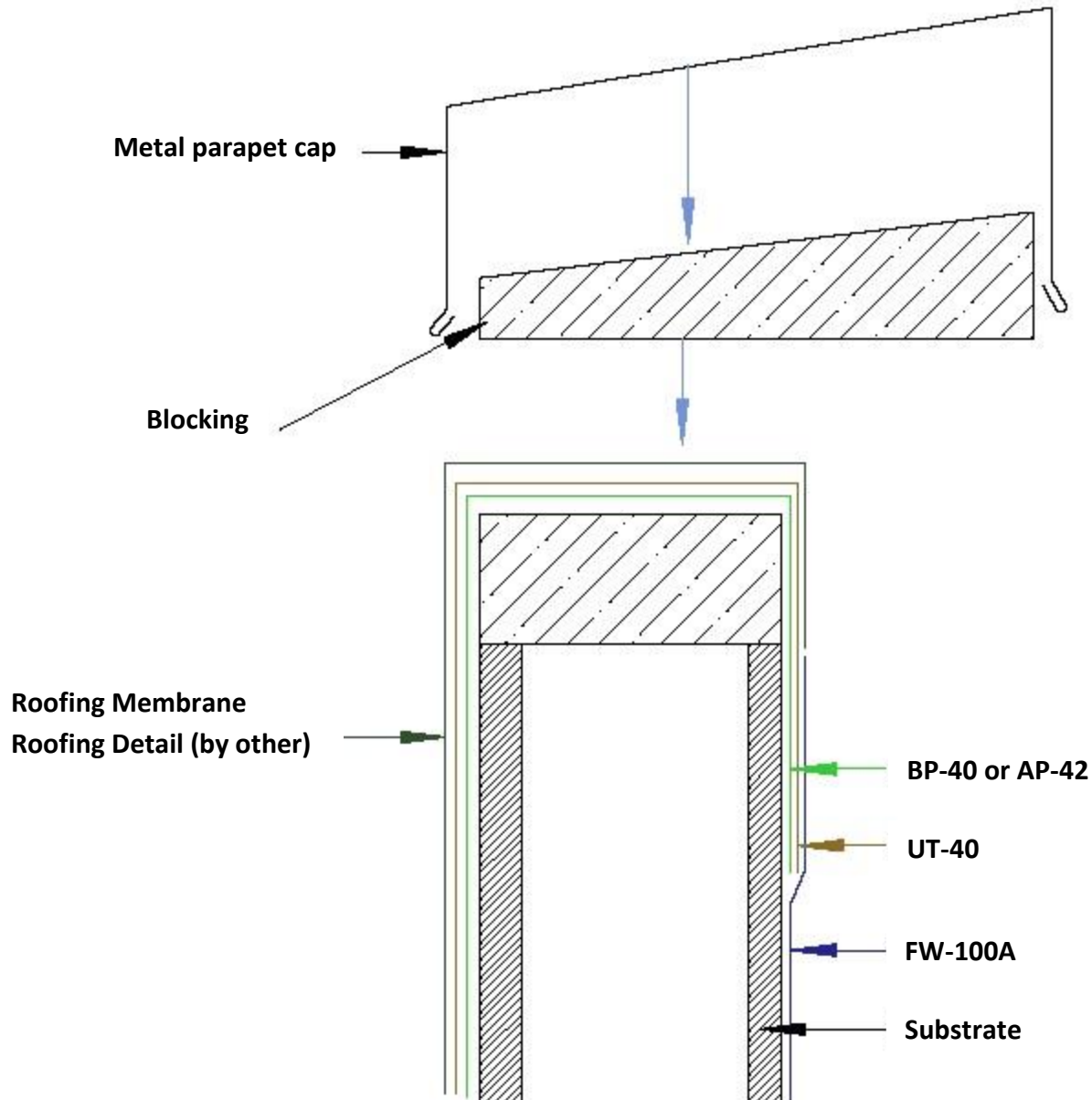


830-995-5177

info@stscoatings.com

Manufactured by





PARAPET OPTION 1 DETAIL

Wall Guardian FW-100A System, Not to Scale



830-995-5177

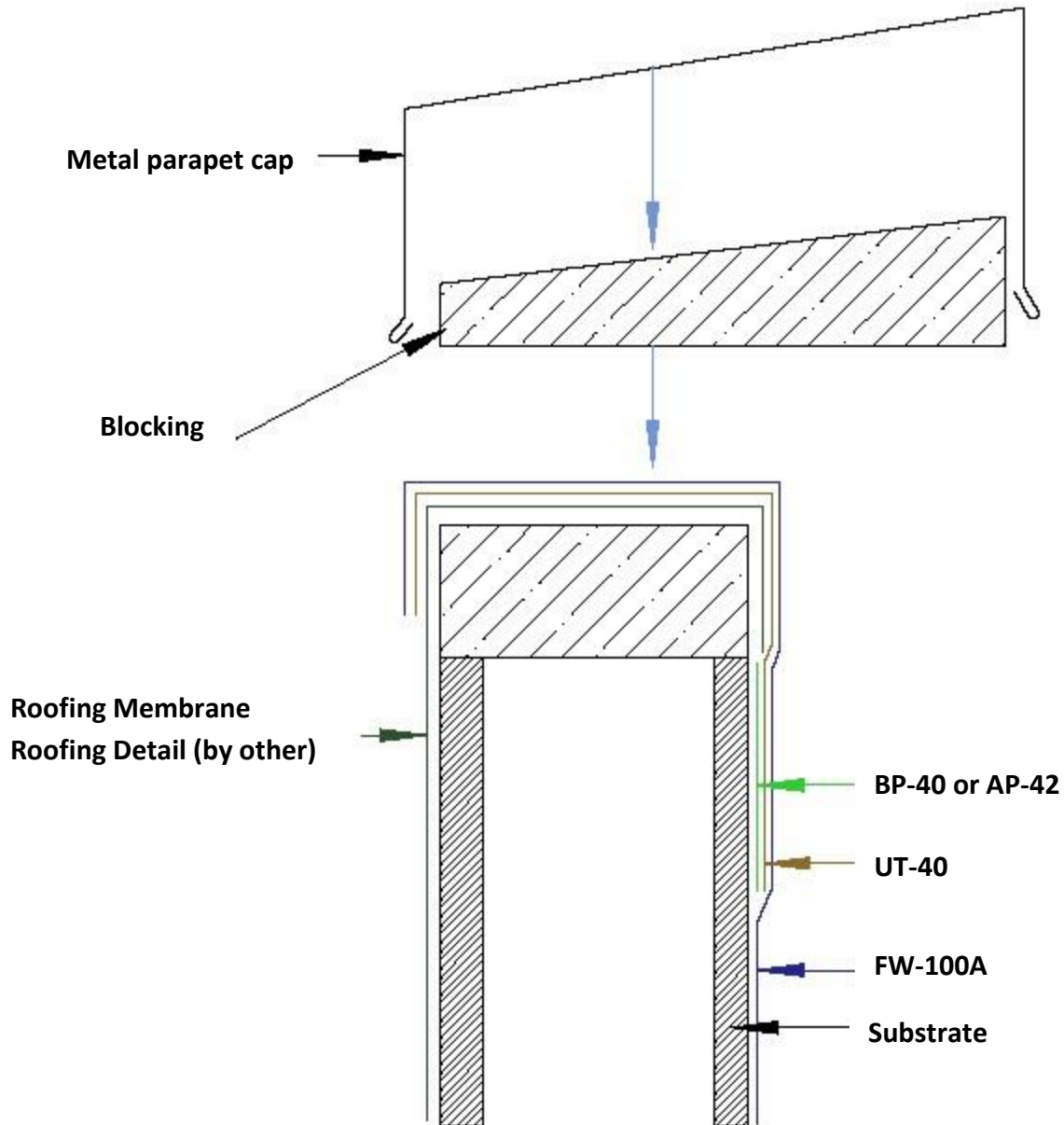
info@stscoatings.com

Manufactured by

Detail is intended to be a guide for air barrier installation only. As a manufacturer of construction materials, STS Coatings does not assume responsibility for errors in design or engineering. Architect or owners representative must verify suitability of details.

Rev: 052016





PARAPET OPTION 2 DETAIL

Wall Guardian FW-100A System, Not to Scale



830-995-5177

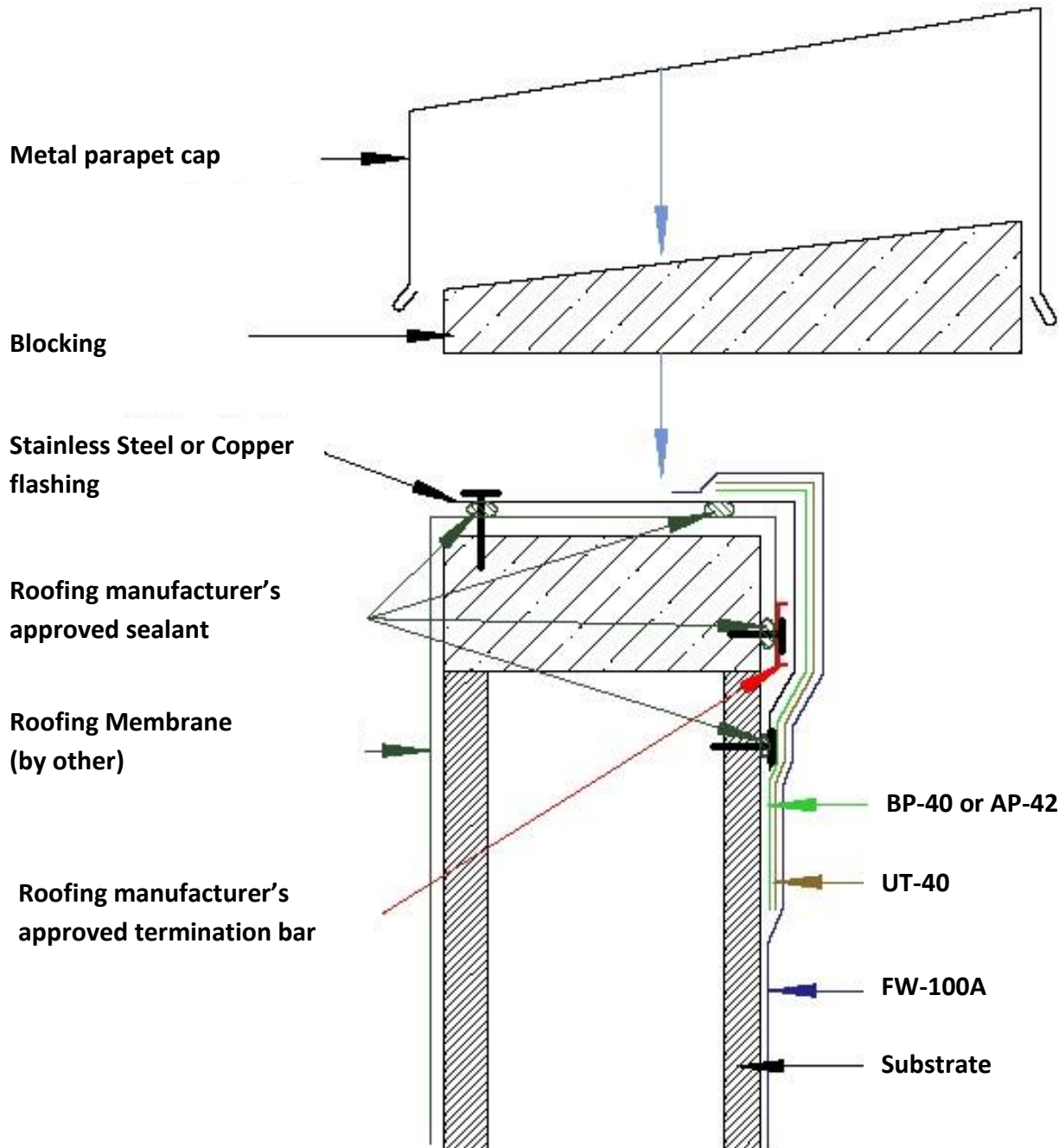
info@stscoatings.com

Manufactured by

Detail is intended to be a guide for air barrier installation only. As a manufacturer of construction materials, STS Coatings does not assume responsibility for errors in design or engineering. Architect or owners representative must verify suitability of details.

Rev: 052016





PARAPET OPTION 3 DETAIL

Wall Guardian FW-100A System, Not to Scale



830-995-5177

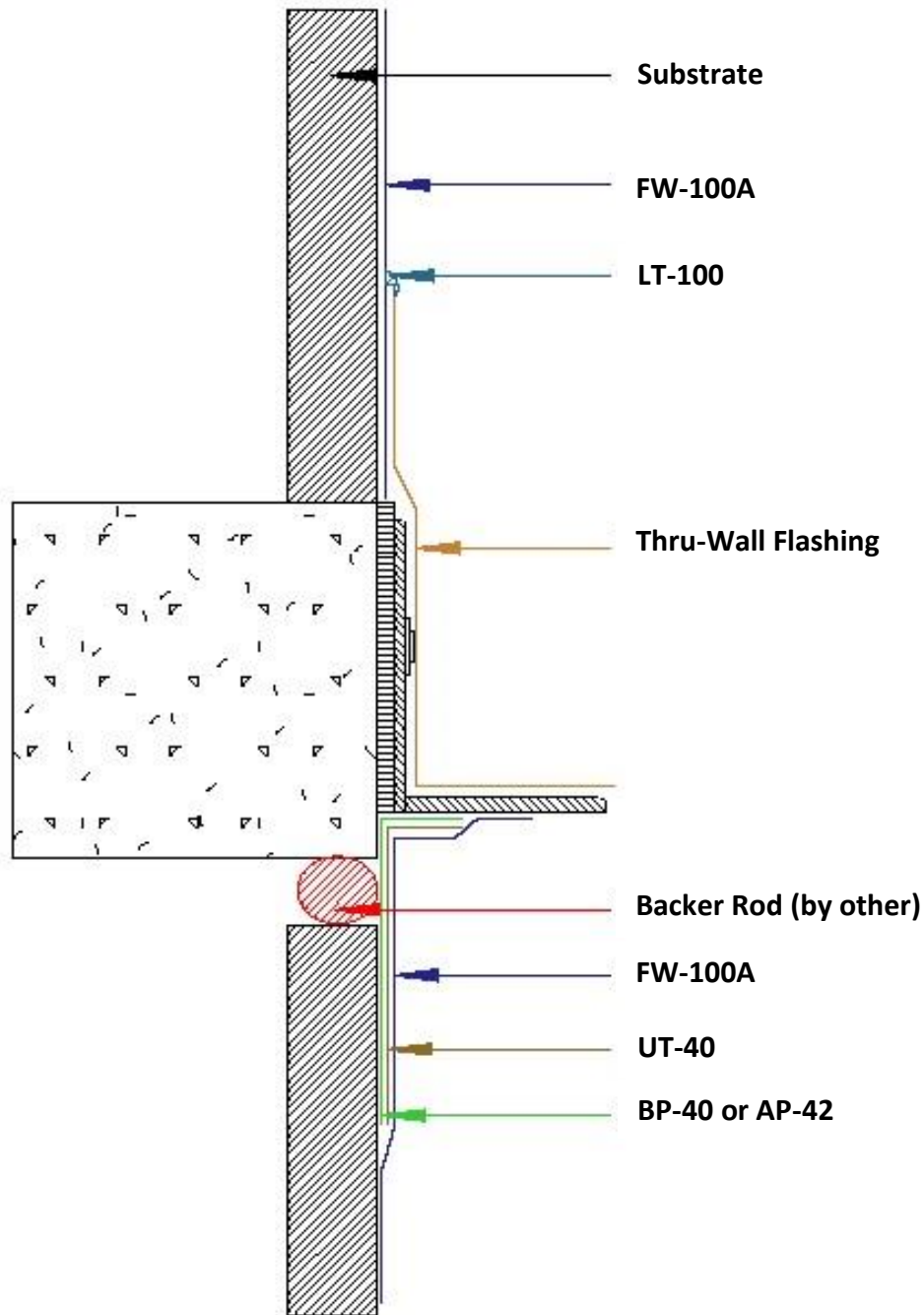
info@stscoatings.com

Manufactured by

Detail is intended to be a guide for air barrier installation only. As a manufacturer of construction materials, STS Coatings does not assume responsibility for errors in design or engineering. Architect or owners representative must verify suitability of details.

Rev: 052016





SHELF ANGLE DETAIL

Wall Guardian FW-100A System, Not to Scale



830-995-5177

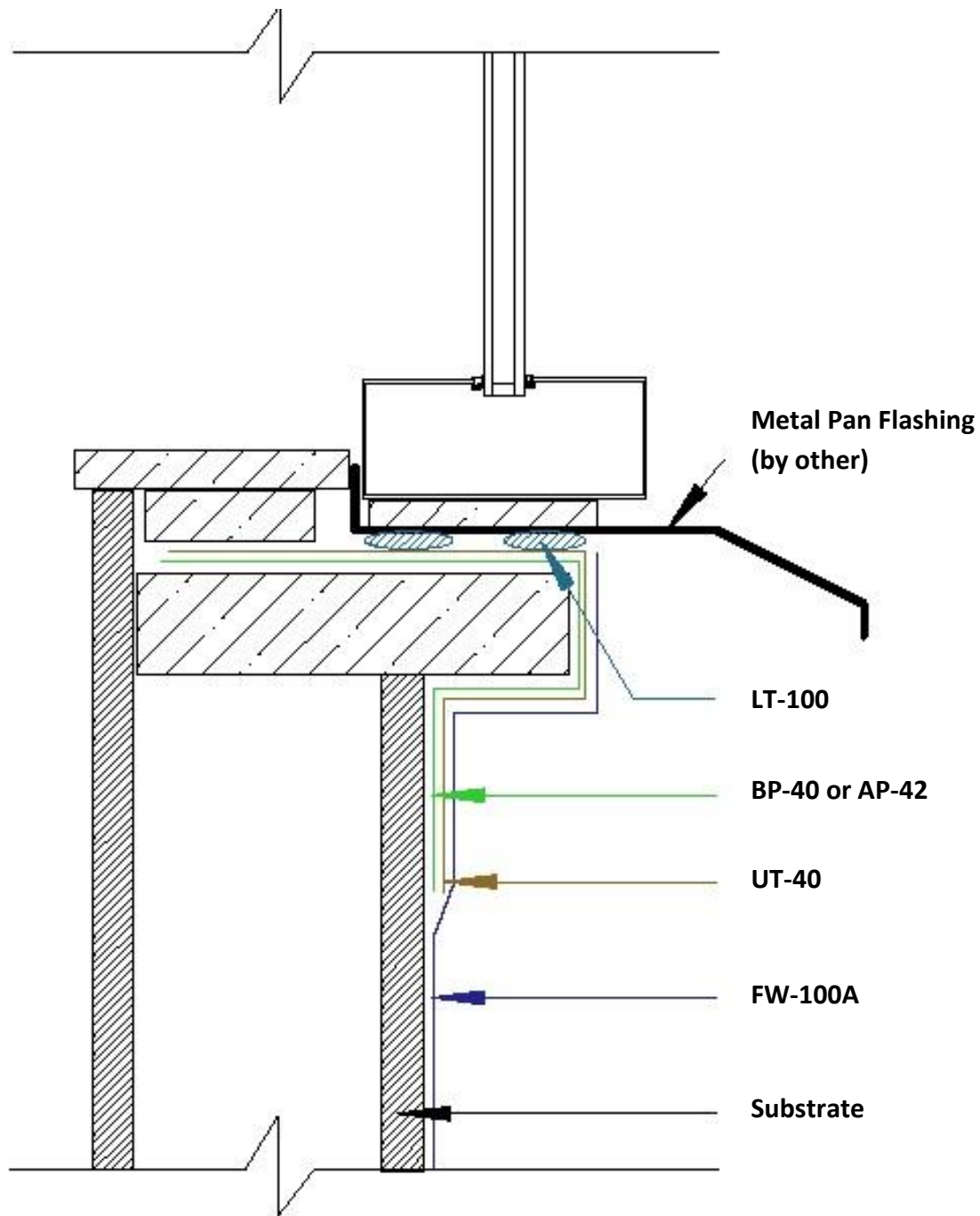
info@stscoatings.com

Manufactured by

Detail is intended to be a guide for air barrier installation only. As a manufacturer of construction materials, STS Coatings does not assume responsibility for errors in design or engineering. Architect or owners representative must verify suitability of details.

Rev: 052016





WINDOW SILL DETAIL

Wall Guardian FW-100A System, Not to Scale



830-995-5177

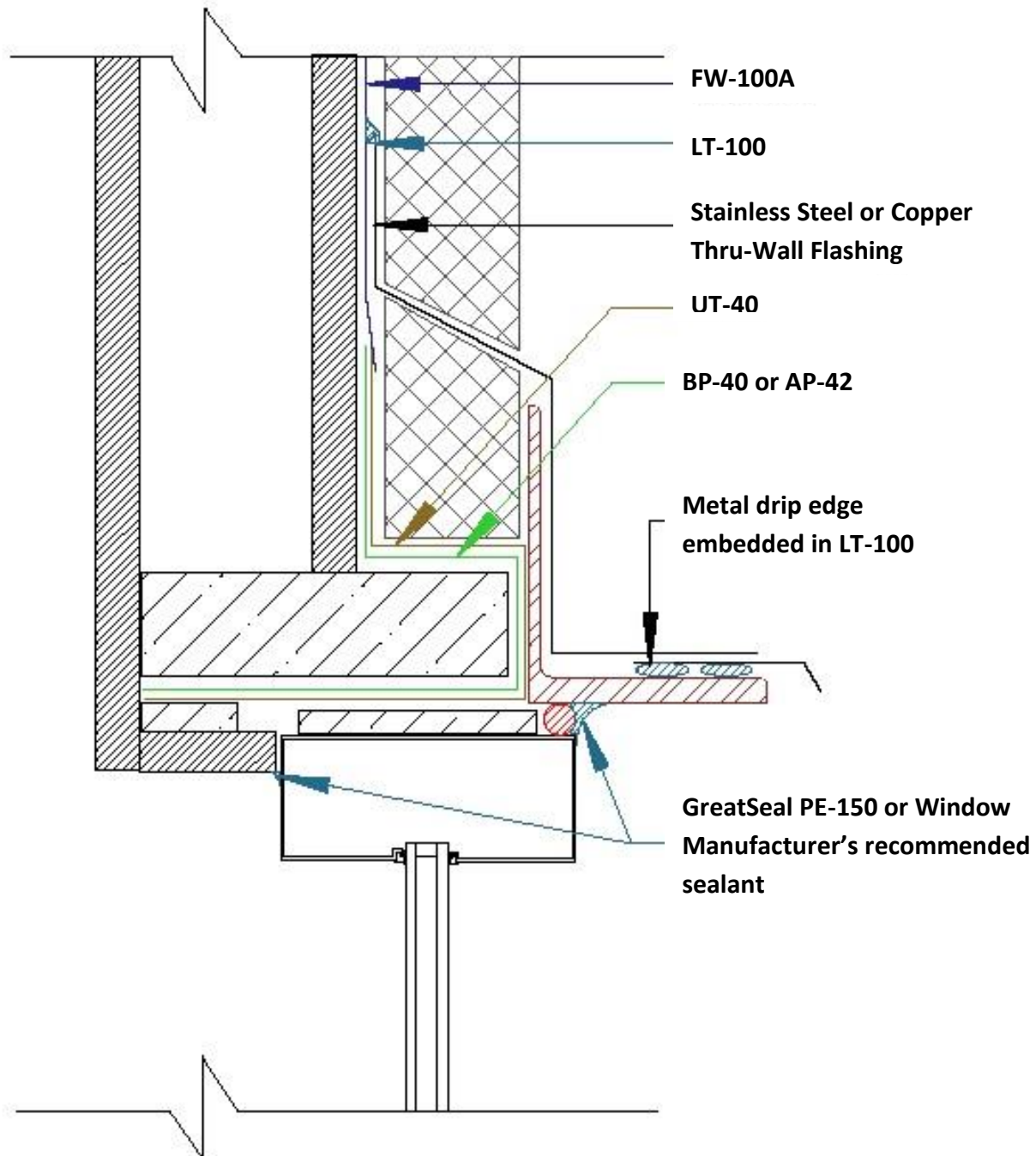
info@stscoatings.com

Manufactured by

Detail is intended to be a guide for air barrier installation only. As a manufacturer of construction materials, STS Coatings does not assume responsibility for errors in design or engineering. Architect or owners representative must verify suitability of details.

Rev: 052016





WINDOW HEADER DETAIL LOOSE LINTEL DESIGN

Wall Guardian FW-100A System, Not to Scale

Detail is intended to be a guide for air barrier installation only. As a manufacturer of construction materials, STS Coatings does not assume responsibility for errors in design or engineering. Architect or owners representative must verify suitability of details.

Rev: 052016

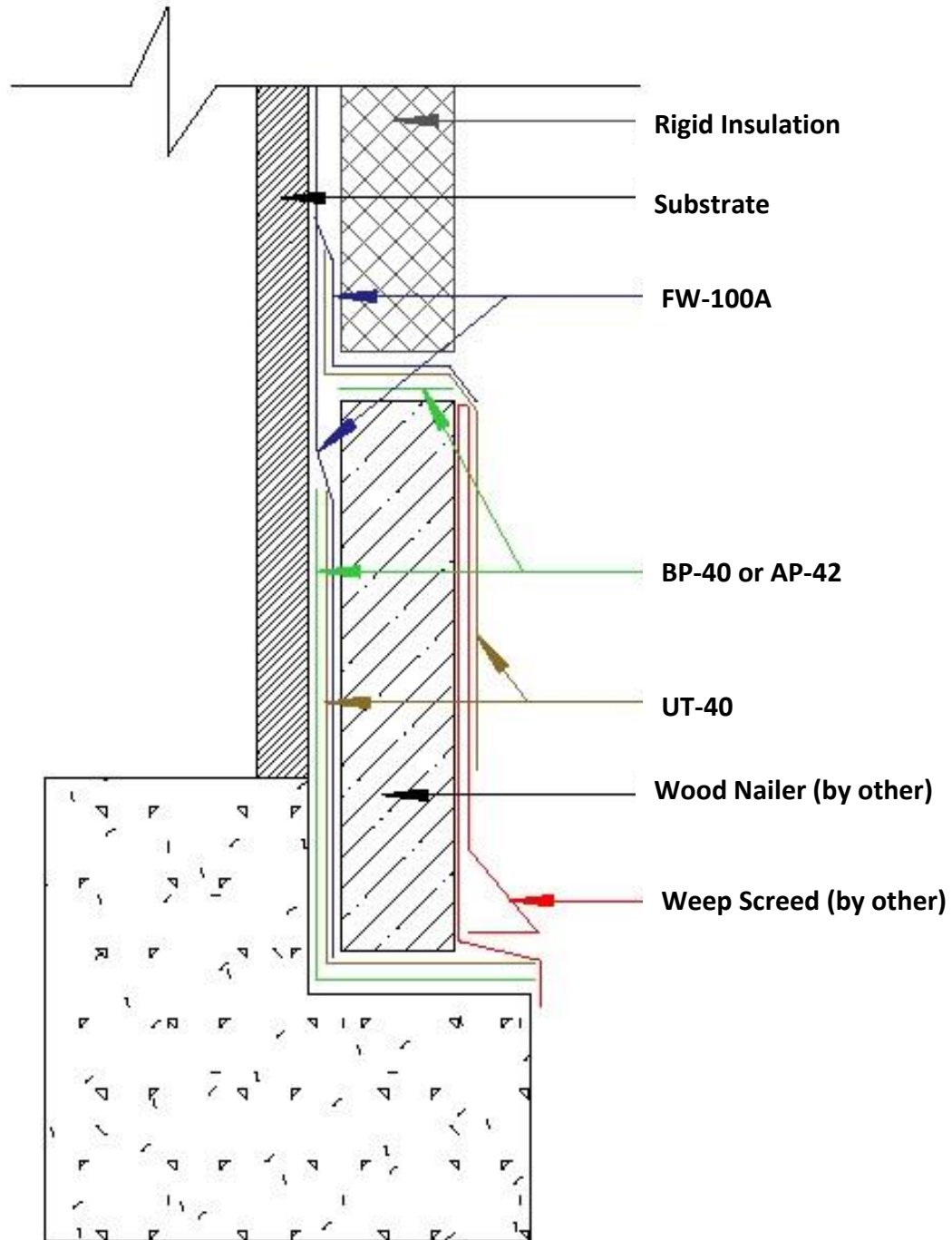


830-995-5177

info@stscoatings.com

Manufactured by





WEEP SCREED OPTION 1 DETAIL

Wall Guardian FW-100A System, Not to Scale

Detail is intended to be a guide for air barrier installation only. As a manufacturer of construction materials, STS Coatings does not assume responsibility for errors in design or engineering. Architect or owners representative must verify suitability of details.

Rev: 052016

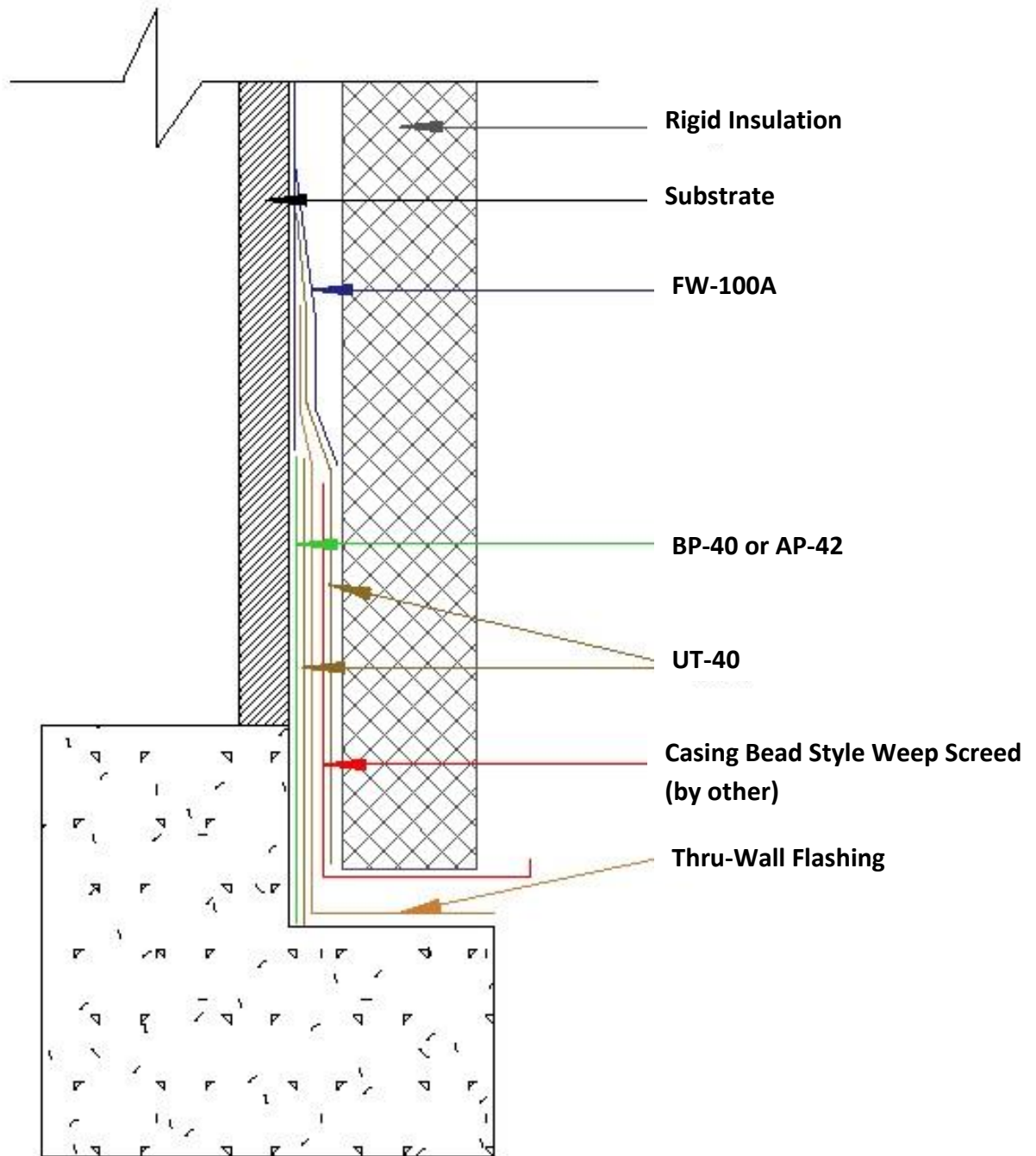


830-995-5177

info@stscoatings.com

Manufactured by





WEEP SCREED OPTION 2 DETAIL

Wall Guardian FW-100A System, Not to Scale

Detail is intended to be a guide for air barrier installation only. As a manufacturer of construction materials, STS Coatings does not assume responsibility for errors in design or engineering. Architect or owners representative must verify suitability of details.

Rev: 052016

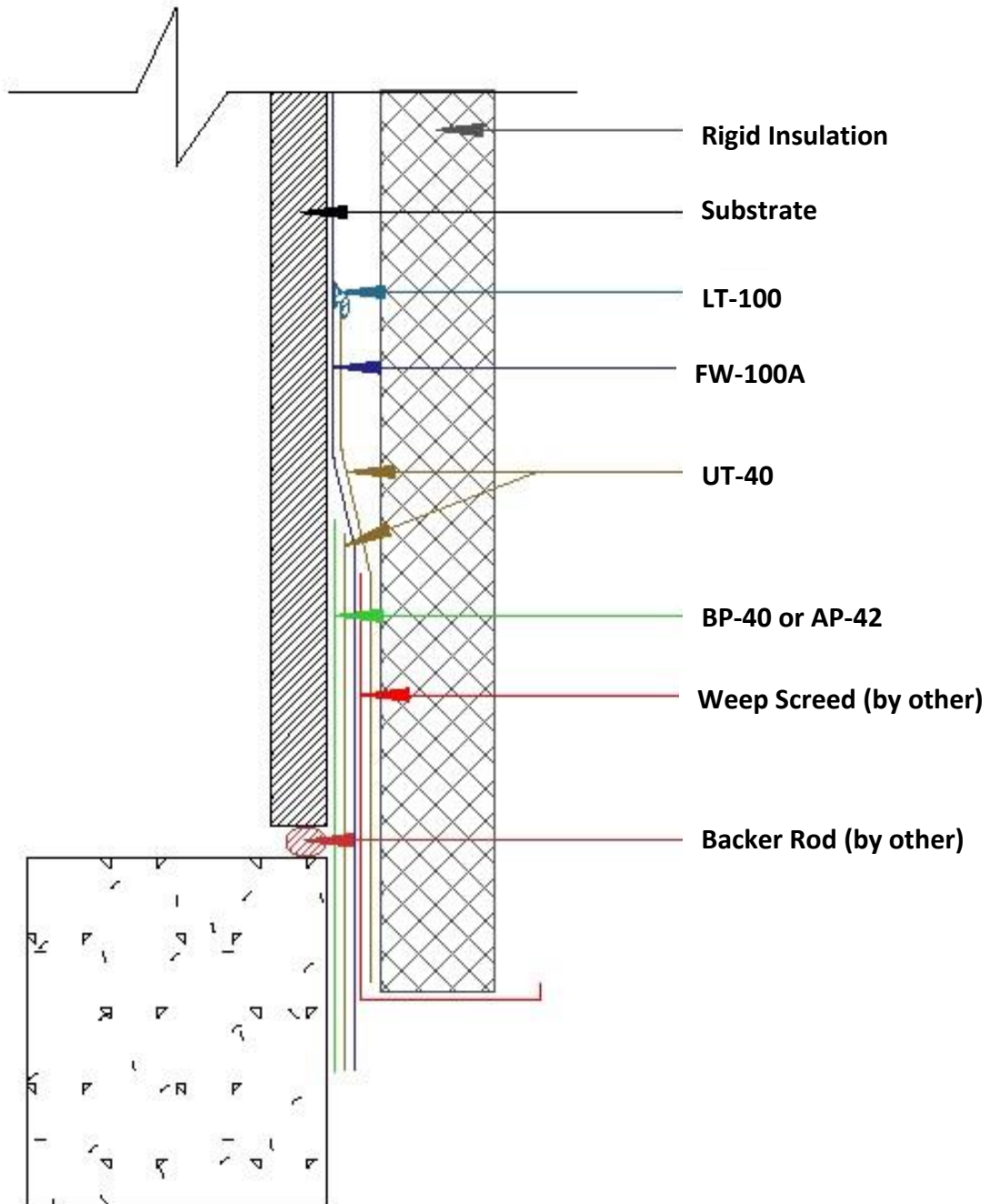


830-995-5177

info@stscoatings.com

Manufactured by





WEEP SCREED OPTION 3 DETAIL

Wall Guardian FW-100A System, Not to Scale

Detail is intended to be a guide for air barrier installation only. As a manufacturer of construction materials, STS Coatings does not assume responsibility for errors in design or engineering. Architect or owners representative must verify suitability of details.

Rev: 052016



830-995-5177

info@stscoatings.com

Manufactured by

